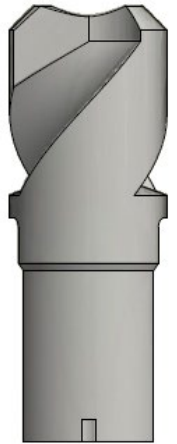


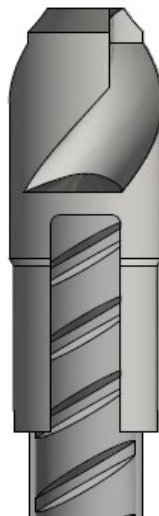
Key Features

- The Resin Mixer System is designed to attach to the up hole end of the CS5 Rock Bolts
- The Resin Mixer System was designed to assist in the installation of Rock Bolts with Chemical Anchors in larger diameter holes by providing:
 - Substantially enhanced mixing of the Chemical Anchors
- The Resin Mixer attachment centralises the bolt in the hole allowing an even distribution of the chemical anchor around the bolt. It also promotes movement of the chemical towards the back of the hole, assisting in mixing whilst consolidating the anchor for improved load transfer properties
- In addition to improved mixing properties the resin mixer also tends to pump the plastic skin of the chemical anchor to the back of the hole which eliminates the ‘gloving’ effect
- Corrosion protection may be provided by hot dip galvanizing or alternative coatings



Installation Guidelines

- The resin mixer is fitted to the end of the bolt by aligning the open slots with the bolts rib profile.
- The rock bolt hole is drilled as per mine support designs.
- Hole depth is critical. Hole depth should be shorter than the bolt to allow for the height of the washer and nut.
- After insertion of the resin anchor the bolt is rotated through the resin anchor while being pushed to the back of the hole. In the case of full encapsulation, anchors of different setting times are often used and the higher speed anchor is to be inserted first followed by the slower speed anchors.
- It is important to follow the resin anchor recommended mixing and hold times as printed on the resin anchor cartons. DO NOT OVER MIX.







Standard Lengths and Packaging

- Standard bolt lengths range from 1500 to 3000mm in 300mm increments.
- Non-standard lengths are available by negotiation.
- Bolts are packaged in bundles with threads protected by heavy duty polyethylene bags.
- Bolt fittings, such as nuts, anti-friction washers and dome balls, are supplied fitted to rock bolts in the configuration requested.

Product Accessories Examples

DSI manufactures a comprehensive range of plates specifically designed for this range of bolts. For the full range see the Surface Support section of the product catalogue.

Product Group	Starplates	Dome Plates	Butterflies	W-Strap
Product Image				
Product Code Prefix	STP	D	BUTT	MW

Notes

- Only DSI rock bolt components should be used to enable the optimum performance of the bolt system to be obtained
- DSI Underground is Quality Assured to ISO 9001:2015 Certificate No.AU003618-3.