

# DOME BALL WASHER

**B0**

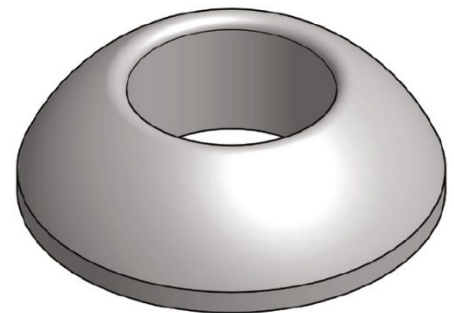
Product Code	Designator	Diameter	Hole Size
	B	05050	24

## Physical Properties

Diameter	Height	Hole Diameter	Net Weight	Thread Size
mm	mm	mm	kg	
50	17	22	0.20	M20
50	17	26	0.12	M24
50	20	32	0.18	M30


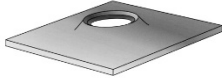


## Key Features

- The use of a Dome Ball, with compatible Domed Plate, generally ensures better alignment of the bolt to the roof and together will maximise load transfer from the bolt to the surrounding rock.
- Without the use of the Dome Ball, bending of the bolt at the collar can occur causing local abnormal loading of the bolt and potential early failure.
- Similarly, without the use of a Dome Ball thread, binding can be a problem during installation limiting the tensioning of the bolt.
- The Dome Ball is suitable for angles of tilt up to 18° with a compatible plate.
- Corrosion protection may be provided by hot dip galvanizing.



## Product Accessories Examples

DSI Underground manufactures a comprehensive range of plates specifically designed for this range of Bolts.

	Products			
Product Group	Starplates	Dome Plates	Butteflies	W-Strap
Product Imagery				
Product Code Prefix	STP	D	BUTT	MW

## Notes

- Only DSI Underground rock bolt components should be used to enable the optimum performance of the bolt system to be obtained
- DSI Underground is Quality Assured to ISO 9001:2015, ISO 14001:2015 and AS-NZS 4801:2001

## Phone APP

- Want to know more; our full product range, knowledge centre, and other details are available via the App; available on iOS and Android devices by searching “DSI Underground”.



iOS



Android