

Product Code Guide	Bit Type	Drill Diameter	Length	Accessories
	EB	4	050	K5

Key Features

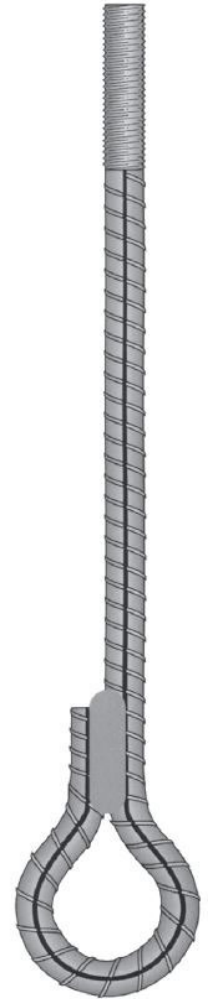
- 24mm Eye Bolts are available for hanging of light services in mining applications.
- Available with a rolled thread M24 x 150mm long to accept a 24mm expansion shell mechanical anchor, or slotted 150mm long x 2.5mm wide to accept a steel wedge
- Inside diameter of eye is 75mm.
- Nominated bolt length is measured from under the eye to the end of the bolt.
- Feed material around eye is lapped back along the bolt shank for a minimum of 50mm before being fillet welded on both sides to AS1554.1-1991.
- Manufactured from mild steel grade material.
- May be supplied galvanized or Obduro coated.

Packaging

- Bundles of 10 units or larger quantities on pallets.

Notes

- Only DSI Underground rock bolt components should be used to enable the optimum performance of the bolt system to be obtained.
- DSI Underground Mining Products Division is Quality Assured to ISO 9001:2015



Typically used products with this item are:

	Products		
Product Group	Plates	Expansion Shell	Wedges
Product Imagery			
Product Code Prefix	OCP	ASES24	WE

Phone APP

Want to know more; our full product range, knowledge centre, and other details are available via the App; available on iOS and Android devices by searching “DSI Underground”.



iOS



Android