

Product Code Guide	Designator	Breakout
	MM	08T

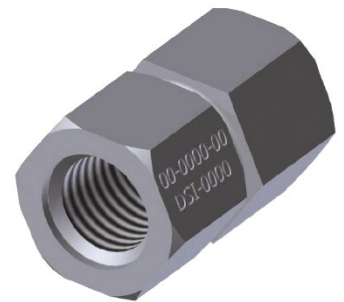
## Physical Properties

	Stage 1 Torque	Stage 2 Torque
	ft/lbs	ft/lbs
MM06T	50 - 100	135 +/- 20
MM08T	50 - 100	206 +/- 20

Note: Torque Test Nuts to be installed with Anti friction washer and Molybond on thread.

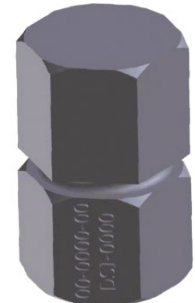
## Key Features

- The Torque Test Nut allows visual indication of the integrity of chemical resin roof bolt installation.
- The Torque Test Nut provides a mixing stage breakout (typical of a standard OZ Nut) and a pre-load torque indication by way of torque limit break point midway along the nut.
- The nut is stamped with a traceability number and an indicative load tonnage.



## Installation Guidelines

- After replacing the breakout nut with a Torque Test Nut, follow standard roof bolt installation procedures for resin anchored bolts.
- Carefully monitor spin and hold times as per manufacturer's specifications.
- Screw the nut up slowly after the holding time.
- Drop the dolly slightly to reduce the thrust pressure against the nut.
- Tighten the nut slowly using only enough thrust to advance nut up the bolt thread.
- Stop the spin immediately as soon as the nut cracks to avoid frictional heating.



## Notes

- DSI Underground is Quality Assured to ISO 9001:2015

Typically, accessories used are:

	Products		
Product Group	Butterfly Plate	Resin	Bolts
Product Imagery			
Product Code Prefix	BUTT	RO	AKH

## Phone APP

Want to know more; our full product range, knowledge centre, and other details are available via the App; available on iOS and Android devices by searching “DSI Underground”.



iOS



Android