

# STAR PLATE 200MM SQUARE

**STP2**

Peak Resin Bolting System

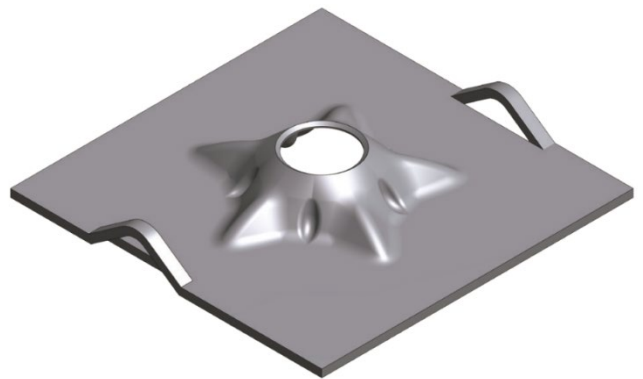
Product Code Guide	Plate Type	Size	Thickness	Hole Diameter	Coating	Packaging
	STP	200	5	36	G	T050

## Physical Properties

Product Code	Plate Thickness	Size	Weight
	mm	mm	kg
STP200536GT050	5	200 x 200	1.63

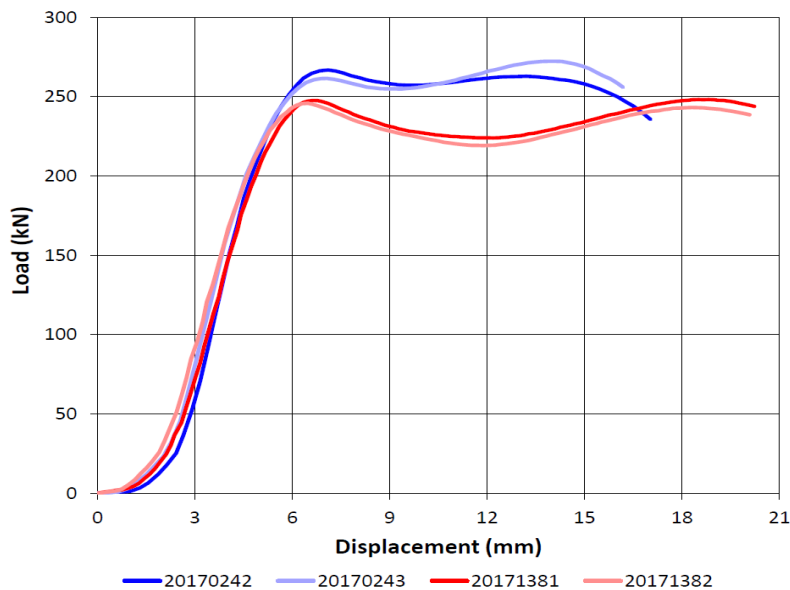
## Key Features

- The star plate 200 has a larger bearing area providing reduced contact pressure with the strata when loaded compared to smaller plates.
- The star plate 200 provides enhanced plate strength with improved mesh containment.
- The plate is light but strong with 2 hanging loops.
- Corrosion protection may be provided by thermal diffusion or hot dipped galvanising.
- The plate is compatible with current ball washers.



## Product Performance

STP200536 Sample Comparison  
Load vs. Displacement





SURFACE SUPPORT – PLATES

Product Code Prefix

# STAR PLATE 200MM SQUARE

## STP2

Peak Resin Bolting System

## Product Accessories Examples

- DSI Underground manufactures a comprehensive range of plates specifically designed for this range of Plates.

Typically, Products used are:

	Products		
Product Group	Dragon Fly	Meshing Plate	Bolts
Product Imagery			
Product Code Prefix	DF3	D170	AKH

## Packaging

- Star Plates are packed on special carrying clamps and then palletised.

## Notes

- DSI Underground is Quality Assured to ISO 9001:2015.

## Phone APP

- Want to know more; our full product range, knowledge centre, and other details are available via the App; available on iOS and Android devices by searching "DSI Underground".



iOS



Android

**DSI Underground**  
 25 Pacific Highway  
 NSW 2290 Bennetts Green  
 Australia

**Phone** +61 2 49489099  
**Fax** +61 2 49484087  
**E-mail** sales@dsiunderground.com.au  
 www.dsiunderground.com.au

**Published Date** 17.12.2020

*All dimensions, weights, quantities and specifications are those applicable at the time of this publication and may be amended from time to time. Please contact your local DSI Underground representative for final confirmation of any key specifications.*